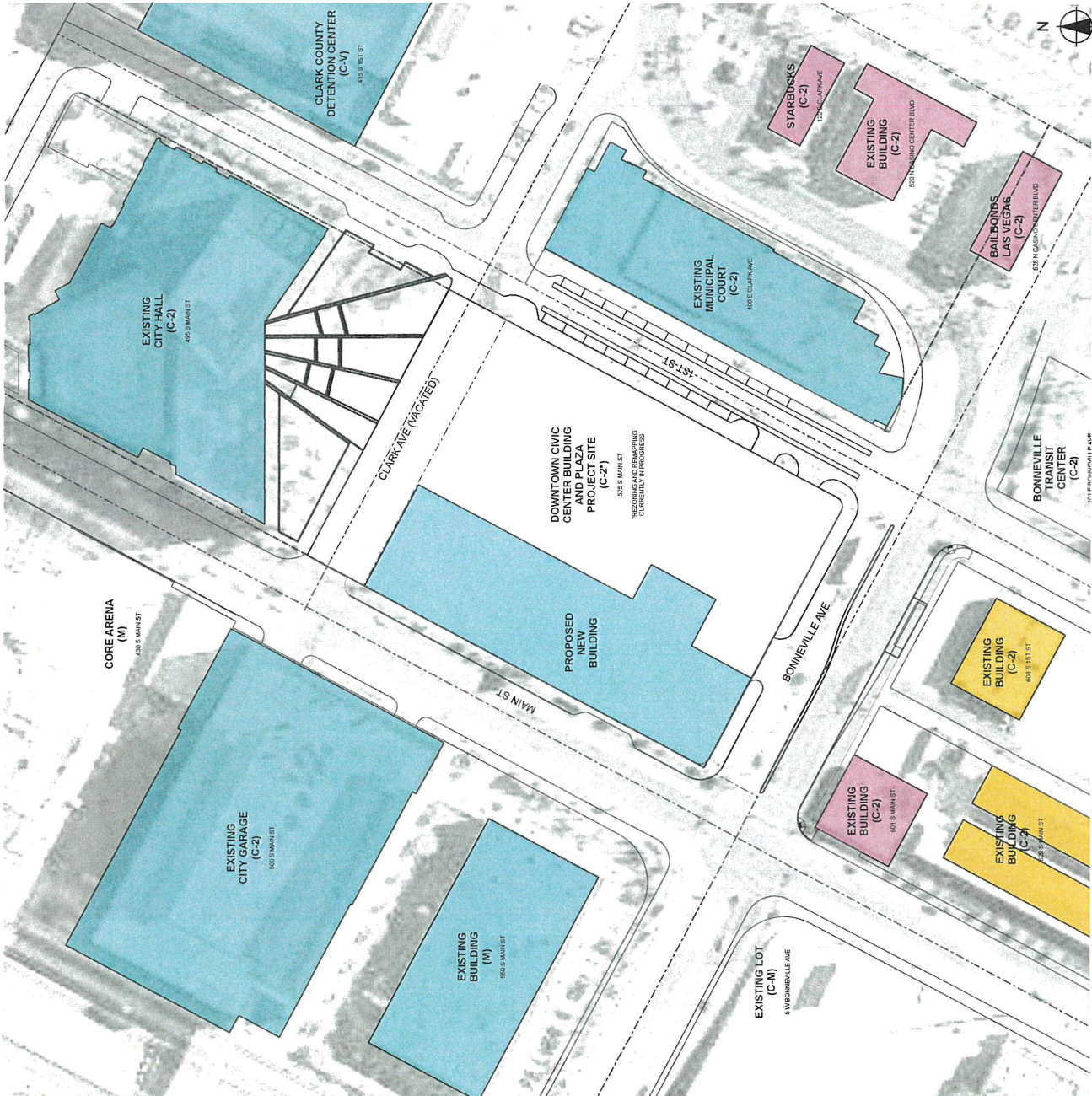


**NOTE: THE FOLLOWING DOCUMENTATION  
WAS SUBMITTED FOR THE RECORD BEFORE  
OR AT THE PLANNING COMMISSION HEARING  
ON THIS ITEM WHICH IS NOW APPEARING  
BEFORE THE CITY COUNCIL**

Submitted after final agenda

**Item 28**



PROJECT LOCATION	PROJECT INFORMATION

139342 100114 (C-2)  
139342 100115 (C-2)  
139342 100116 (C-M)  
139342 100117 (C-2)  
139342 100118 (C-2)  
139343 110011 (C-2)  
139343 110021 (C-2)  
139343 110031 (C-2)  
139343 110041 (C-M)  
139343 110051 (C-M)  
139343 110061 (C-M)  
139343 110071 (C-2)  
139343 110117 (C-2)  
139343 110118 (C-2)  
139343 110119 (C-2)  
139343 110201 (C-2)  
139343 110211 (C-2)  
139343 110221 (C-2)

<p>"PARCELS LISTED ABOVE ARE IN THE PROCESS OF BEING REMAPPED BY THE CITY OF LAS VEGAS TO BE A COMBINATION OF ZONING DISTRICTS OF R2, R3, R4, R5, R6, R7, R8, R9, R10, R11, R12, R13, R14, R15, R16, R17, R18, R19, R20, R21, R22, R23, R24, R25, R26, R27, R28, R29, R30, R31, R32, R33, R34, R35, R36, R37, R38, R39, R40, R41, R42, R43, R44, R45, R46, R47, R48, R49, R50, R51, R52, R53, R54, R55, R56, R57, R58, R59, R60, R61, R62, R63, R64, R65, R66, R67, R68, R69, R70, R71, R72, R73, R74, R75, R76, R77, R78, R79, R80, R81, R82, R83, R84, R85, R86, R87, R88, R89, R90, R91, R92, R93, R94, R95, R96, R97, R98, R99, R100, R101, R102, R103, R104, R105, R106, R107, R108, R109, R110, R111, R112, R113, R114, R115, R116, R117, R118, R119, R120, R121, R122, R123, R124, R125, R126, R127, R128, R129, R130, R131, R132, R133, R134, R135, R136, R137, R138, R139, R140, R141, R142, R143, R144, R145, R146, R147, R148, R149, R150, R151, R152, R153, R154, R155, R156, R157, R158, R159, R160, R161, R162, R163, R164, R165, R166, R167, R168, R169, R170, R171, R172, R173, R174, R175, R176, R177, R178, R179, R180, R181, R182, R183, R184, R185, R186, R187, R188, R189, R190, R191, R192, R193, R194, R195, R196, R197, R198, R199, R200, R201, R202, R203, R204, R205, R206, R207, R208, R209, R210, R211, R212, R213, R214, R215, R216, R217, R218, R219, R220, R221, R222, R223, R224, R225, R226, R227, R228, R229, R230, R231, R232, R233, R234, R235, R236, R237, R238, R239, R240, R241, R242, R243, R244, R245, R246, R247, R248, R249, R250, R251, R252, R253, R254, R255, R256, R257, R258, R259, R260, R261, R262, R263, R264, R265, R266, R267, R268, R269, R270, R271, R272, R273, R274, R275, R276, R277, R278, R279, R280, R281, R282, R283, R284, R285, R286, R287, R288, R289, R290, R291, R292, R293, R294, R295, R296, R297, R298, R299, R300, R301, R302, R303, R304, R305, R306, R307, R308, R309, R310, R311, R312, R313, R314, R315, R316, R317, R318, R319, R320, R321, R322, R323, R324, R325, R326, R327, R328, R329, R330, R331, R332, R333, R334, R335, R336, R337, R338, R339, R340, R341, R342, R343, R344, R345, R346, R347, R348, R349, R350, R351, R352, R353, R354, R355, R356, R357, R358, R359, R360, R361, R362, R363, R364, R365, R366, R367, R368, R369, R370, R371, R372, R373, R374, R375, R376, R377, R378, R379, R380, R381, R382, R383, R384, R385, R386, R387, R388, R389, R390, R391, R392, R393, R394, R395, R396, R397, R398, R399, R400, R401, R402, R403, R404, R405, R406, R407, R408, R409, R410, R411, R412, R413, R414, R415, R416, R417, R418, R419, R420, R421, R422, R423, R424, R425, R426, R427, R428, R429, R430, R431, R432, R433, R434, R435, R436, R437, R438, R439, R440, R441, R442, R443, R444, R445, R446, R447, R448, R449, R450, R451, R452, R453, R454, R455, R456, R457, R458, R459, R460, R461, R462, R463, R464, R465, R466, R467, R468, R469, R470, R471, R472, R473, R474, R475, R476, R477, R478, R479, R480, R481, R482, R483, R484, R485, R486, R487, R488, R489, R490, R491, R492, R493, R494, R495, R496, R497, R498, R499, R500, R501, R502, R503, R504, R505, R506, R507, R508, R509, R510, R511, R512, R513, R514, R515, R516, R517, R518, R519, R520, R521, R522, R523, R524, R525, R526, R527, R528, R529, R530, R531, R532, R533, R534, R535, R536, R537, R538, R539, R540, R541, R542, R543, R544, R545, R546, R547, R548, R549, R550, R551, R552, R553, R554, R555, R556, R557, R558, R559, R560, R561, R562, R563, R564, R565, R566, R567, R568, R569, R570, R571, R572, R573, R574, R575, R576, R577, R578, R579, R580, R581, R582, R583, R584, R585, R586, R587, R588, R589, R590, R591, R592, R593, R594, R595, R596, R597, R598, R599, R600, R601, R602, R603, R604, R605, R606, R607, R608, R609, R610, R611, R612, R613, R614, R615, R616, R617, R618, R619, R620, R621, R622, R623, R624, R625, R626, R627, R628, R629, R630, R631, R632, R633, R634, R635, R636, R637, R638, R639, R640, R641, R642, R643, R644, R645, R646, R647, R648, R649, R650, R651, R652, R653, R654, R655, R656, R657, R658, R659, R660, R661, R662, R663, R664, R665, R666, R667, R668, R669, R670, R671, R672, R673, R674, R675, R676, R677, R678, R679, R680, R681, R682, R683, R684, R685, R686, R687, R688, R689, R690, R691, R692, R693, R694, R695, R696, R697, R698, R699, R700, R701, R702, R703, R704, R705, R706, R707, R708, R709, R710, R711, R712, R713, R714, R715, R716, R717, R718, R719, R720, R721, R722, R723, R724, R725, R726, R727, R728, R729, R730, R731, R732, R733, R734, R735, R736, R737, R738, R739, R740, R741, R742, R743, R744, R745, R746, R747, R748, R749, R750, R751, R752, R753, R754, R755, R756, R757, R758, R759, R760, R761, R762, R763, R764, R765, R766, R767, R768, R769, R770, R771, R772, R773, R774, R775, R776, R777, R778, R779, R780, R781, R782, R783, R784, R785, R786, R787, R788, R789, R790, R791, R792, R793, R794, R795, R796, R797, R798, R799, R800, R801, R802, R803, R804, R805, R806, R807, R808, R809, R810, R811, R812, R813, R814, R815, R816, R817, R818, R819, R820, R821, R822, R823, R824, R825, R826, R827, R828, R829, R830, R831, R</p>
---

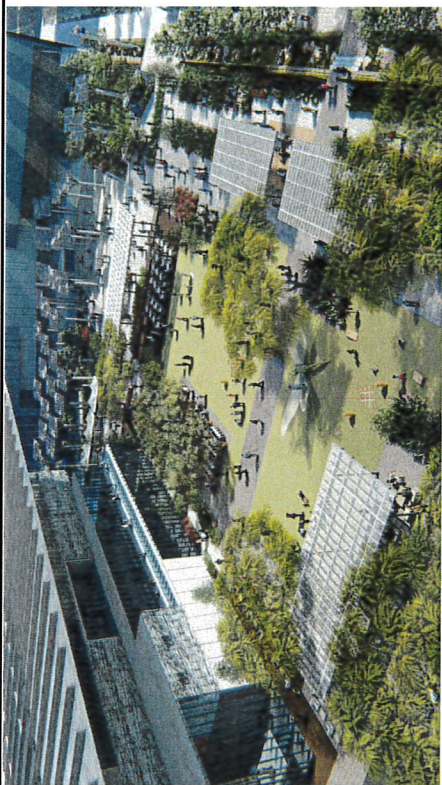




PLAZA ENTRY FROM S 1ST



AERIAL AT E BONNEVILLE AND S 1ST



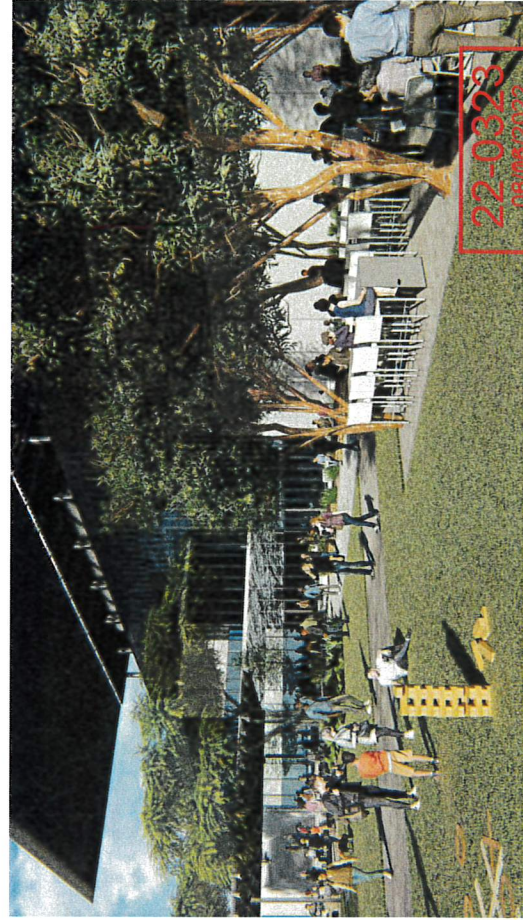
AERIAL AT E CLARK AND S 1ST



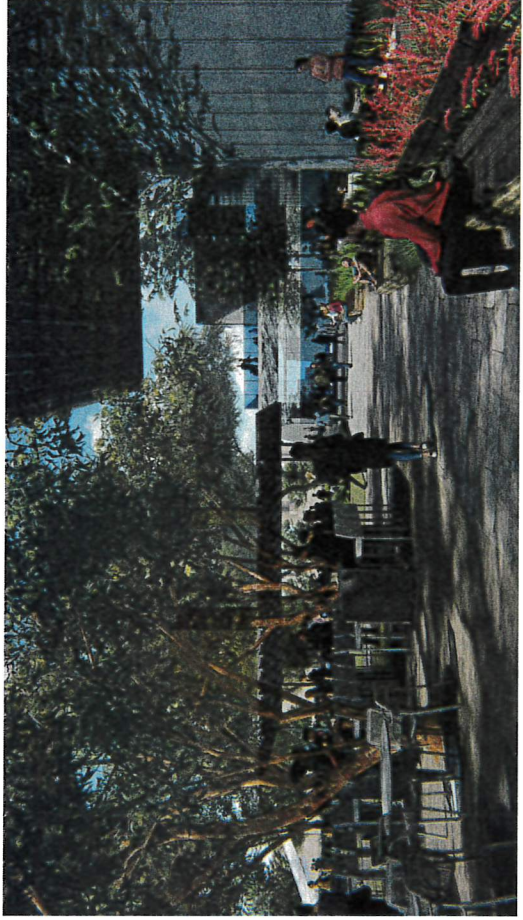
AERIAL FROM CITY HALL LOOKING TO E BONNEVILLE

NO.	DATE	SHEET

22-0023  
 06/16/2022



AT LAWN LOOKING TO GROVE



WALKWAY WITH CITY HALL TO BACK



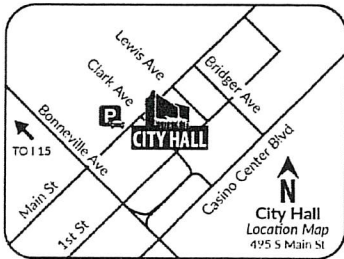
FROM S 1ST LOOKING TOWARDS ARBOR



UNDER ARBOR LOOKING TOWARD CITY HALL

City of Las Vegas, Department of Planning  
495 South Main Street  
Las Vegas, Nevada 89101

**Return Service Requested**  
**Official Notice of Public Hearing**



Scan or go to:  
[www.lasvegasnevada.gov/meetings](http://www.lasvegasnevada.gov/meetings)

For additional information, scan the QR Code, select the meeting date shown below and then find the referenced project. To file your protest or support on this request, check one box below and return this card in an envelope with postage to the Department of Planning at the above address, fax this side of this card to (702) 464-7499 or make your comments at [www.lasvegasnevada.gov](http://www.lasvegasnevada.gov). To contact your Council Representative, please call (702) 229-6405.



I SUPPORT  
this Request



I OPPOSE  
this Request

Please use available blank space on card for your comments.

**22-0323-SDR1**

Planning Commission Meeting of **08/09/2022**

RECEIVED  
AUG 01 2022

PRSRT  
FIRST CLASS MAIL  
U.S. Postage  
**PAID**  
Las Vegas, NV  
Permit No. 1630

RECEIVED  
AUG 04 2022

Dept of Planning  
City of Las Vegas

22-0323-SDR1

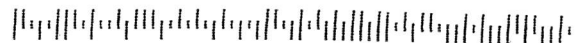
13934210004

OAKBROOK REALTY & INVEST II LLC

1000 ROYCE BLVD

OAKBROOK IL 60181-4809

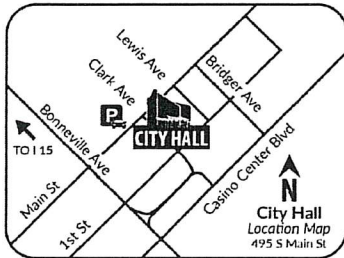
132 DRDGNP1 60181



28A

City of Las Vegas, Department of Planning  
495 South Main Street  
Las Vegas, Nevada 89101

**Return Service Requested**  
**Official Notice of Public Hearing**



Scan or go to:  
[www.lasvegasnevada.gov/meetings](http://www.lasvegasnevada.gov/meetings)

For additional information, scan the QR Code, select the meeting date shown below and then find the referenced project. To file your protest or support on this request, check one box below and return this card in an envelope with postage to the Department of Planning at the above address, fax this side of this card to (702) 464-7499 or make your comments at [www.lasvegasnevada.gov](http://www.lasvegasnevada.gov). To contact your Council Representative, please call (702) 229-6405.



I SUPPORT  
this Request



I OPPOSE  
this Request

Please use available blank space on card for your comments.

**22-0323-SDR1**

Planning Commission Meeting of **08/09/2022**

PRSRT  
FIRST CLASS MAIL  
U.S. Postage  
**PAID**  
Las Vegas, NV  
Permit No. 1630

RECEIVED

AUG 01 2020

RECEIVED

AUG 04 2022

Dept of Planning  
City of Las Vegas

22-0323-SDR1

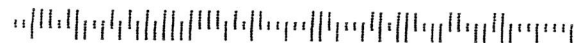
13934210003

OAKBROOK REALTY & INVEST II LLC

1000 ROYCE BLVD

OAKBROOK IL 60181-4809

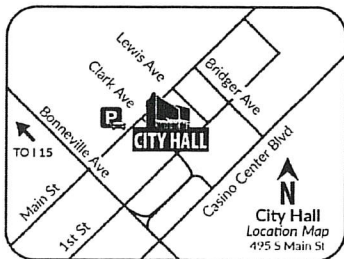
132 DRDGNP1 60181



28A

City of Las Vegas, Department of Planning  
495 South Main Street  
Las Vegas, Nevada 89101

**Return Service Requested**  
**Official Notice of Public Hearing**



Scan or go to:  
[www.lasvegasnevada.gov/meetings](http://www.lasvegasnevada.gov/meetings)

For additional information, scan the QR Code, select the meeting date shown below and then find the referenced project. To file your protest or support on this request, check one box below and return this card in an envelope with postage to the Department of Planning at the above address, fax this side of this card to (702) 464-7499 or make your comments at [www.lasvegasnevada.gov](http://www.lasvegasnevada.gov). To contact your Council Representative, please call (702) 229-6405.



I SUPPORT  
this Request



I OPPOSE  
this Request

Please use available blank space on card for your comments.

**22-0323-SDR1**

Planning Commission Meeting of **08/09/2022**

PRSRT  
FIRST CLASS MAIL  
U.S. Postage  
**PAID**  
Las Vegas, NV  
Permit No. 1630

RECEIVED

AUG 01 2020

RECEIVED

AUG 04 2022

Dept of Planning  
City of Las Vegas

22-0323-SDR1

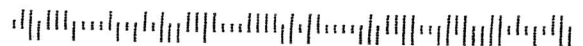
13934201020

OAKBROOK REALTY INVEST II L L C

1000 ROYCE BLVD

OAKBROOK IL 60181-4809

132 DRDGNP1 60181



28A